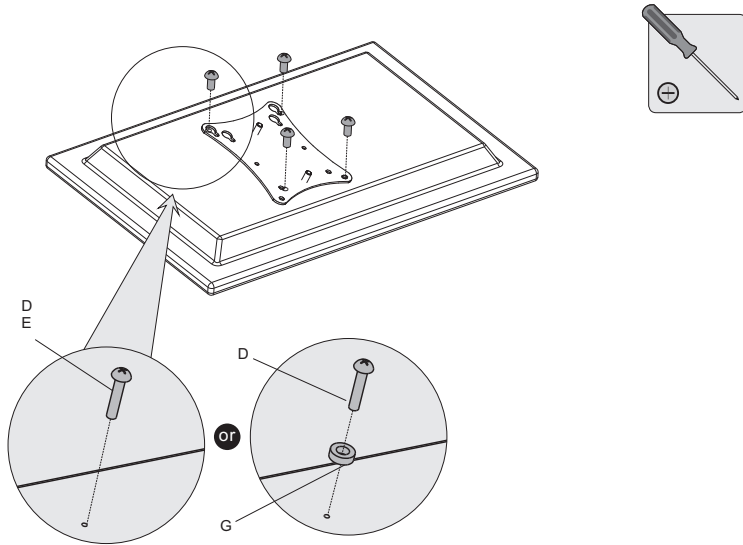
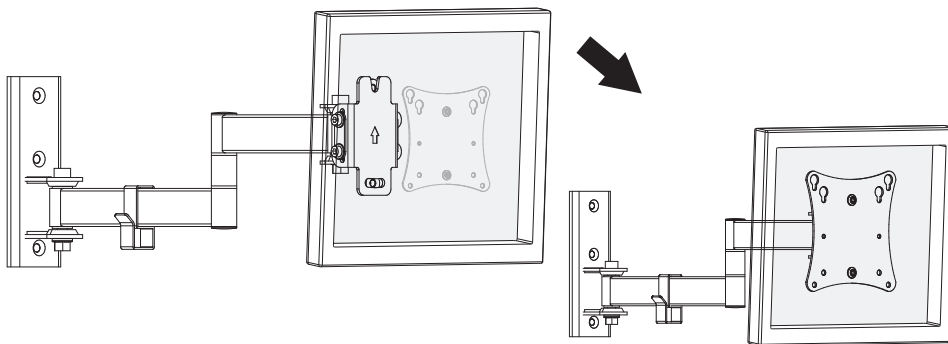


Step 2: Mount VESA Plate Onto TV



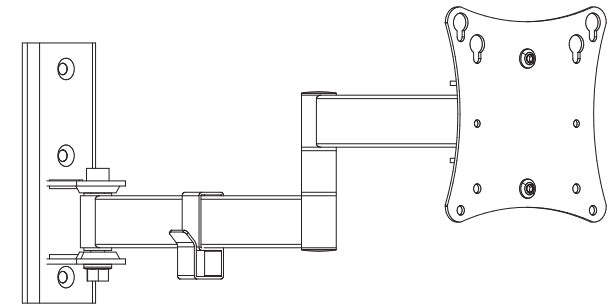
Step 3: Lock VESA Plate&Plastic Cover onto Wall Mount



Tension is already pre-set at the factory. If it's too tight or too loose, you may adjust the tension by loosening or tightening the adjustment bolts.

Full Motion TV Wall Mount

ZLA01-112



VESA
75x75 100x100

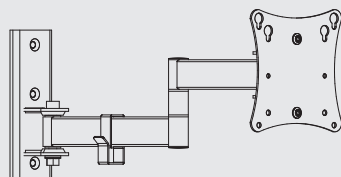
MOST
13"-23"
TVs

Rated
25kg/55lbs

CAUTION: DO NOT EXCEED RATED LISTED WEIGHT. SERIOUS INJURY OR PROPERTY DAMAGE MAY OCCUR!

NOTE: Read the entire instruction manual before you start installation and assembly.

Component Checklist: Ensure that you have received all parts as below before installation. If any parts are missing or faulty, telephone your local distributor for a replacement.

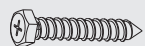


wall mount (x1)



cable clip (x1)

Hardware



ST6.3x55 (x3)
A



concrete anchor (x3)
B



D6 washer (x3)
C



M4x14 (x4)
D



M5x14 (x4)
E



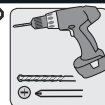
D5 washer (x4)
F



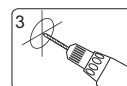
small spacer (x4)
G

Step 1: Mount Wall Plate Onto The Wall

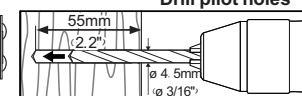
1.1 For Wood Stud Wall Mounting



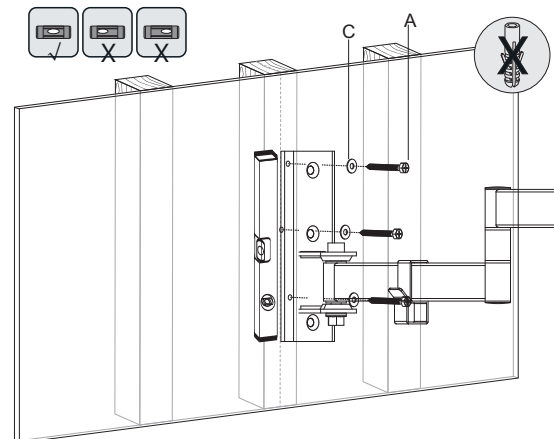
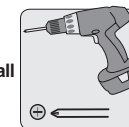
Find and mark the exact location of mounting holes



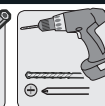
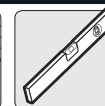
Drill pilot holes



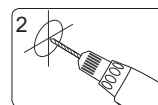
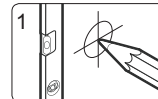
Screw the wall plate onto the wall



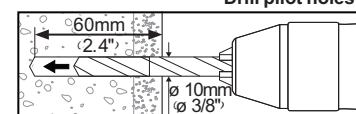
1.2 For Concrete Wall Mounting



Mark the exact location of mounting holes



Drill pilot holes



Screw the wall plate onto the wall

